



■ Features & Application

1. Compact high flux density light source
2. Streamlined thermal path
3. Low voltage DC operation
4. Typical 850 lm at 10W ; view angle 130°
5. RoHS compliance
6. lighting solution

■ Absolute Maximum Ratings

($T_a=25^{\circ}\text{C}$)

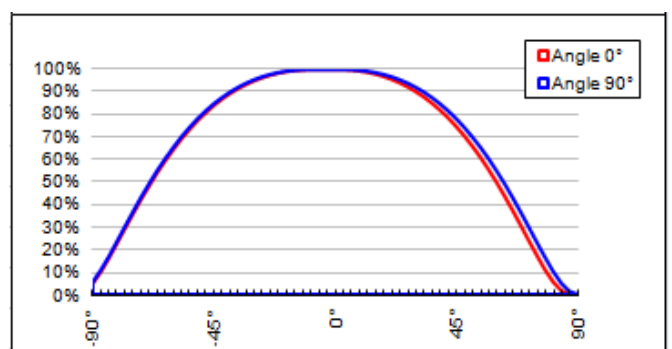
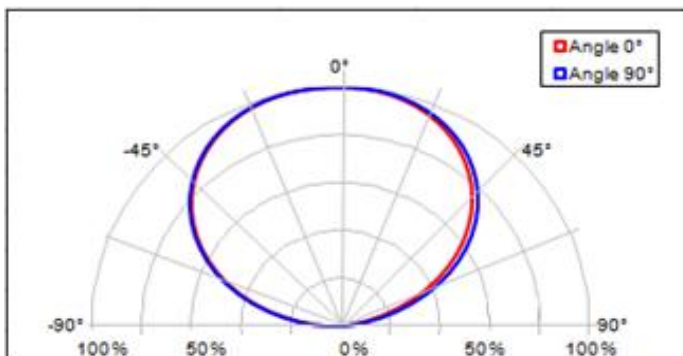
Item	Symbol	Min.	Typ.	Max.	Unit
Forward Voltage	V_f	-	10.2	10.8	V
Forward Current	I_f	-	1.05	-	A
Storage Temperature	TST	-40		85	$^{\circ}\text{C}$

■ Electrical-Optical Characteristics

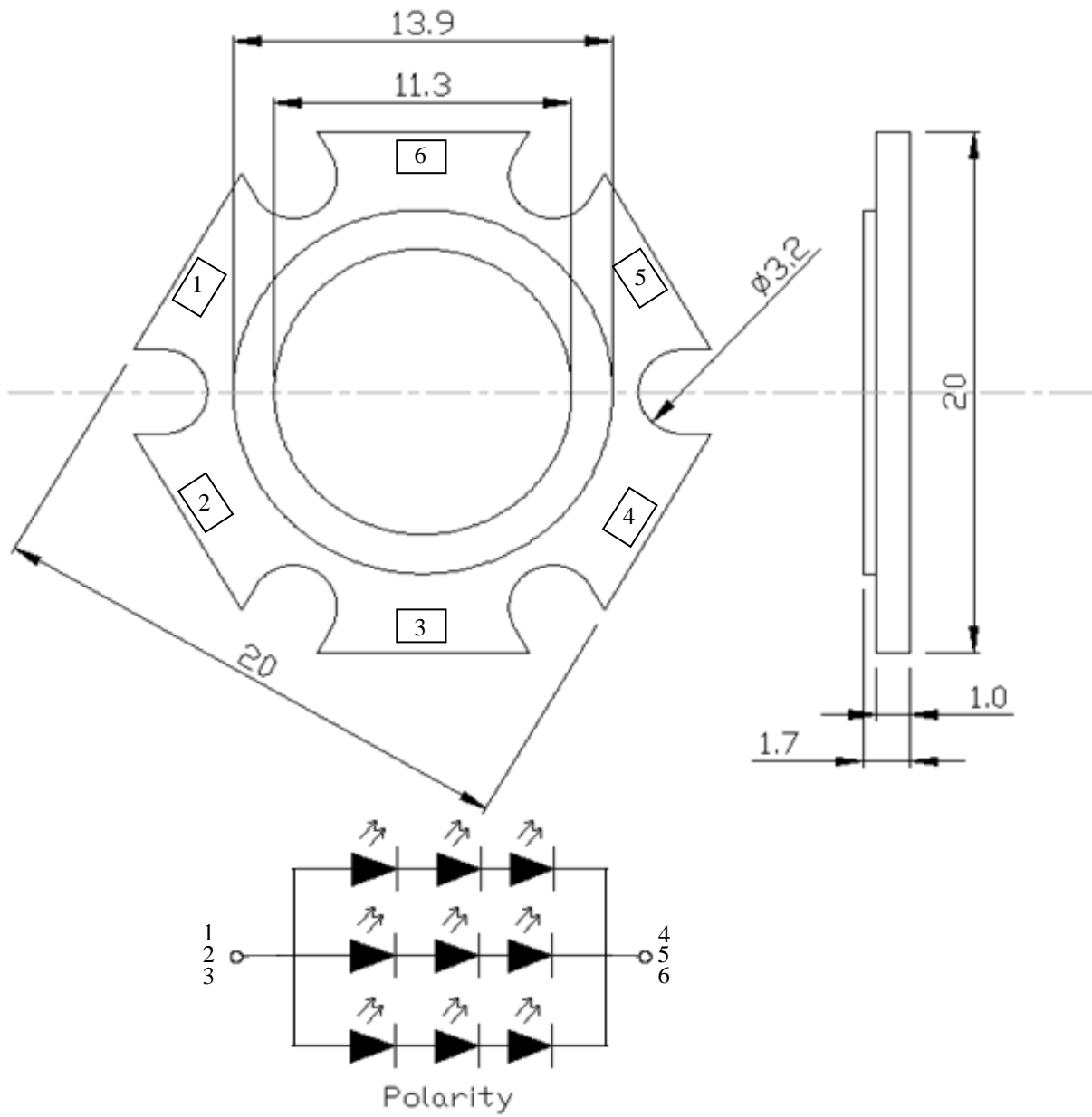
($T_a=25^{\circ}\text{C}$)

Lighting Color	Material	CCT			Flux (lm)*	
		Min		Max	Typ.	Max.
Pure White	InGaN	4500K	5500K	6500K	850	890
Warm White	InGaN	2700K	3000K	3500K	640	665

■ Typical Spatial Radiation Pattern :

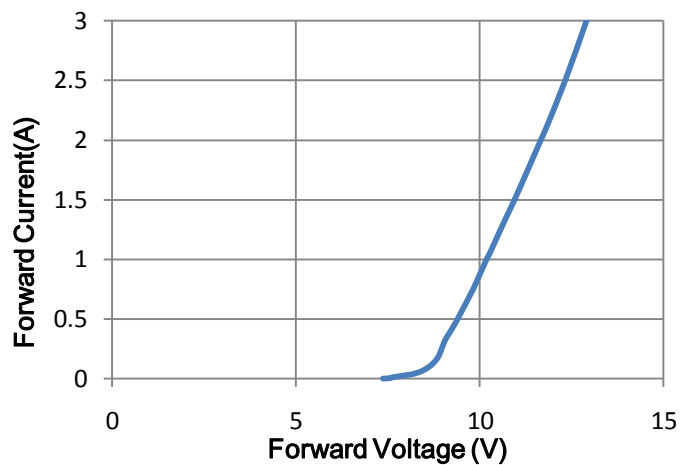
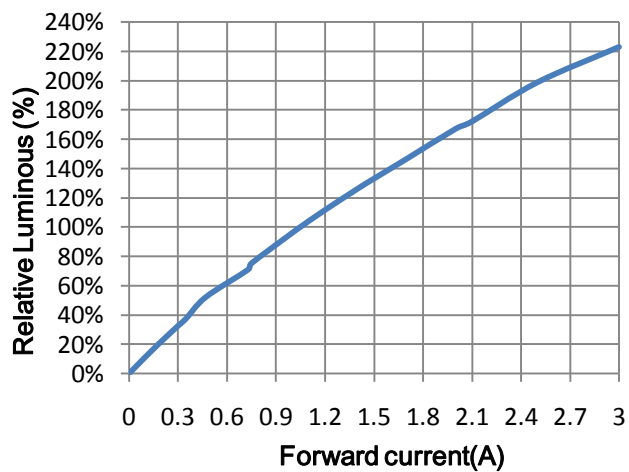
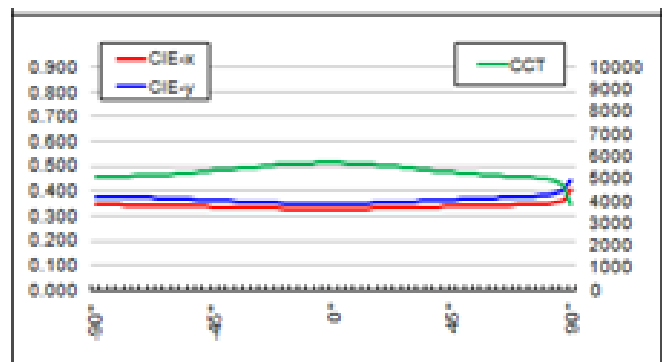
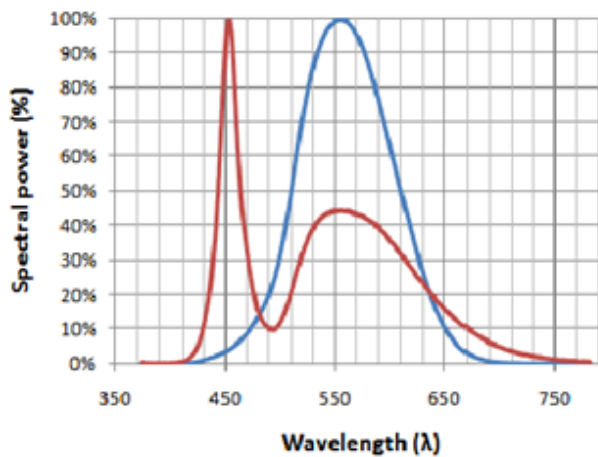


■ Package Outline Dimensions



※All dimensions are in millimeters (tolerance : ± 0.2)

■ Pure White Characteristics



Page	Subjects(major change in previous version)	Date of change	Remark
1-1	Creating	2010-05-18	ariesjill