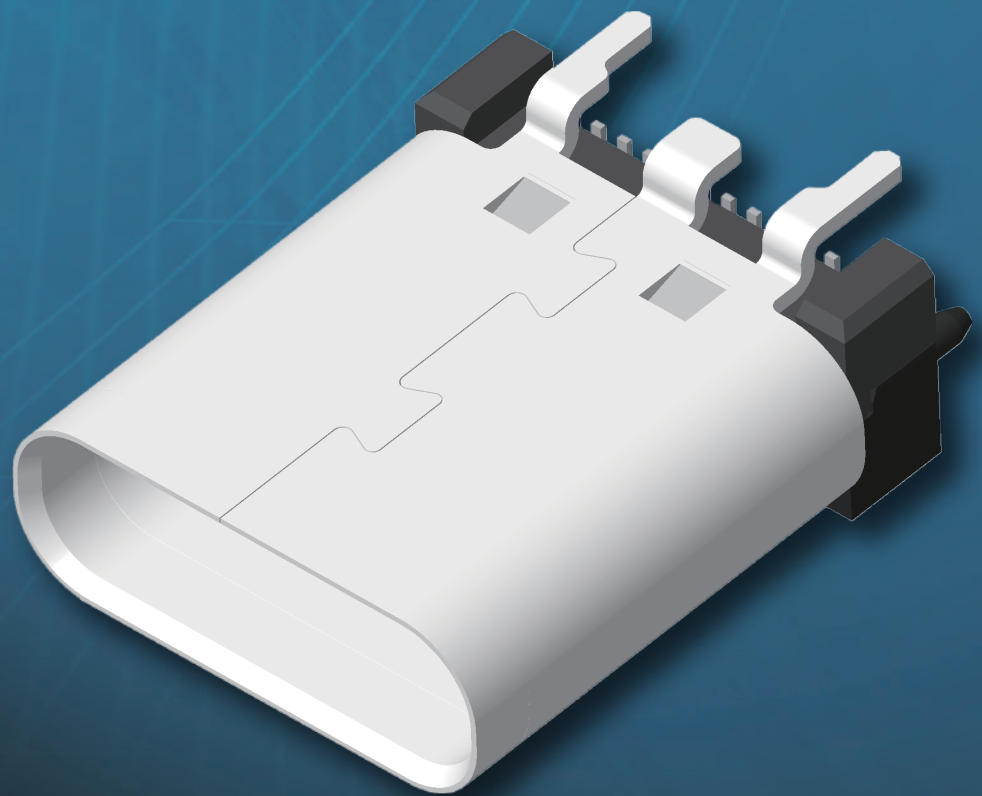


# USB 3.1 Type-C Connectors

---

6-21~6-25

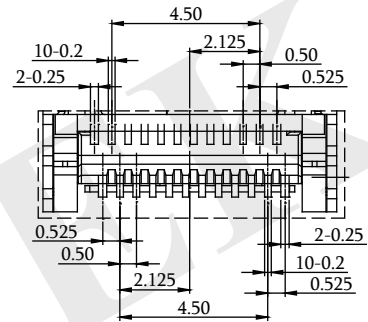
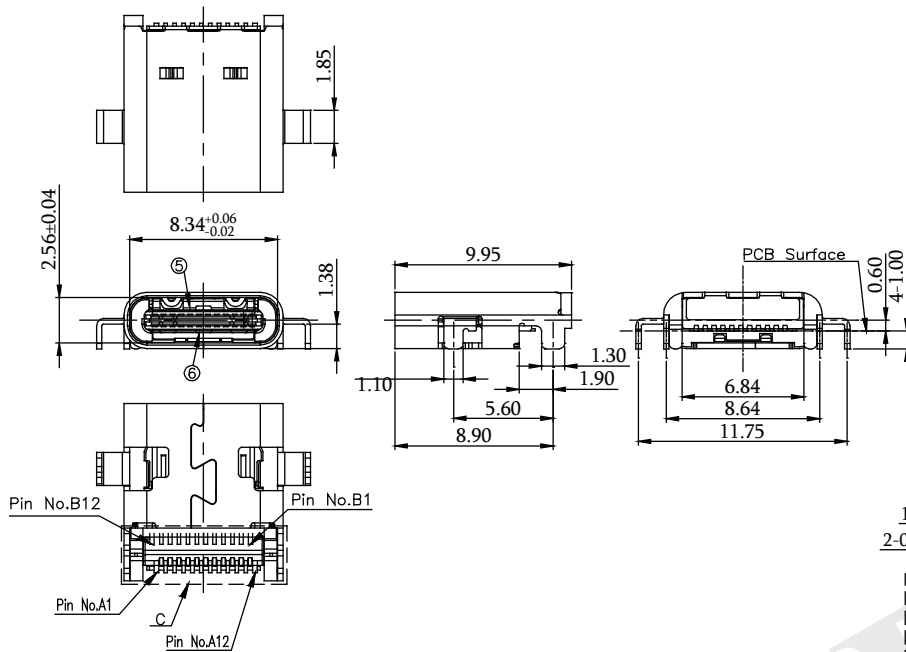
• USB 3.1 Type-C



**AMTEK Technology Co., Ltd**



## USB 3.1 C Type Female SMT 90° 24P

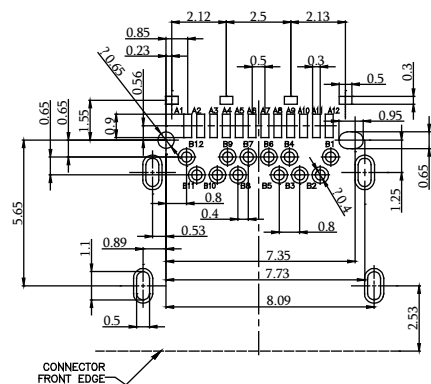
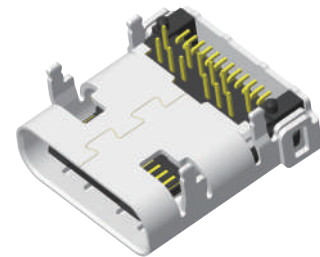
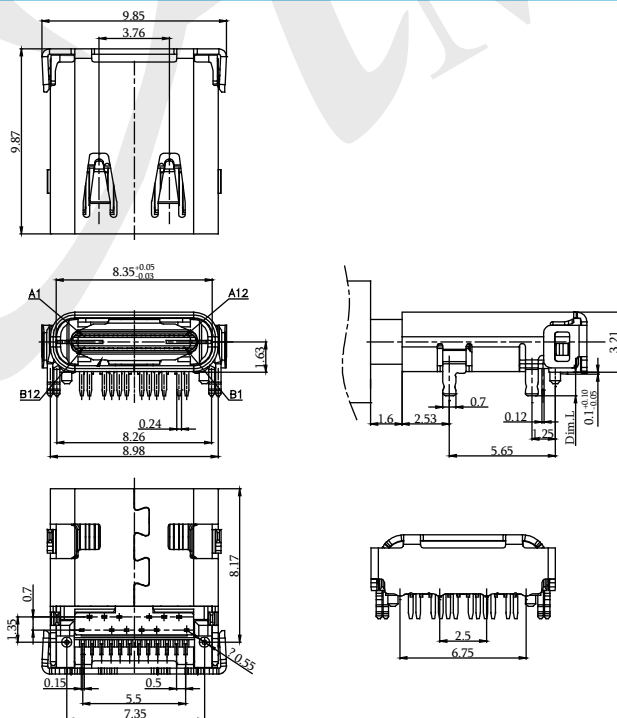


RECOMMENDED PCB PATTERN LAYOUT (PCB THICKNESS: 0.8±0.1)

P/N.: 5US4C01MF-124S0BUHQ1

No.	Name	Material	Finish	Q'ty	Remark
1	Molding A	LCP	Black	1	UL94V-0
2	Contact-Long	Copper Alloy	Gold/Tin Plated	12	
3	Contact-Short	Copper Alloy	Nickel Plated	12	
4	Mid-Plate	SUS	Nickel Plated	1	
5	Top EMI Pad	SUS	Nickel Plated	1	
6	Bottom EMI Pad	SUS	Nickel Plated	1	
7	Shell	SUS	Nickel Plated	1	
8	Molding B	LCP	Black	1	

## USB 3.1 C Type Female SMT 90° 24P



RECOMMENDED PCB PATTERN LAYOUT (PCB THICKNESS: 0.8±0.1)

P/N.: 5US4C02MF-124G0BUHQX

No.	Name	Material	Finish	Q'ty	Remark
1	Shell	SUS	Nickel Plated	1	
2	Latch	SUS	Nickel Plated	12	
3	EMI	SUS	Nickel Plated	12	
4	SMT Connector	Copper Alloy	Gold Plated	1	
5	DIP Connector	Copper Alloy	Gold Plated	1	
6	Latch Housing	Termoplastic	Black	1	UL94V-0
7	SMT Housing	Termoplastic	Black	1	UL94V-0
8	DIP Housing	Termoplastic	Black	1	UL94V-0

Dim.L 1:1.25  
2:0.80  
3:1.10

USB 3.1 C Type

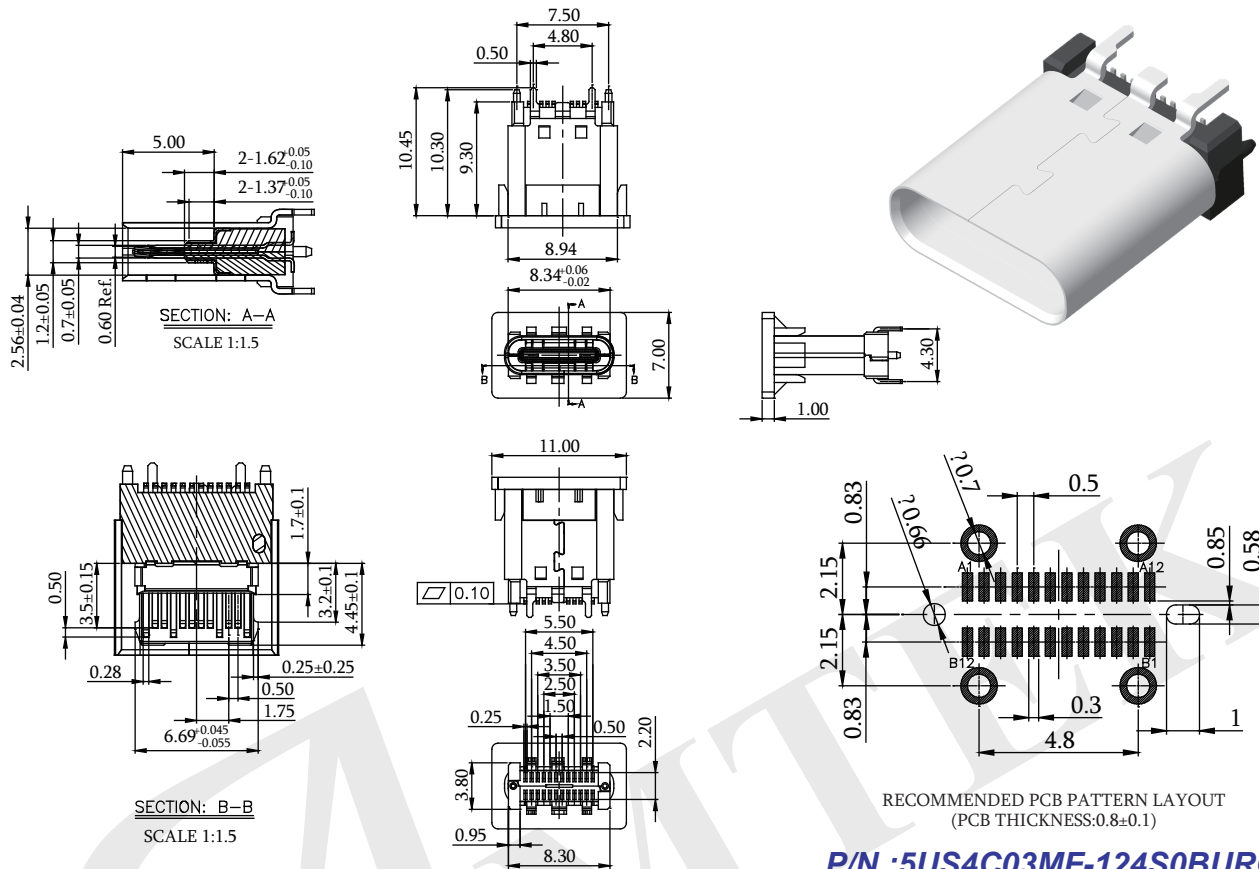


ROHS

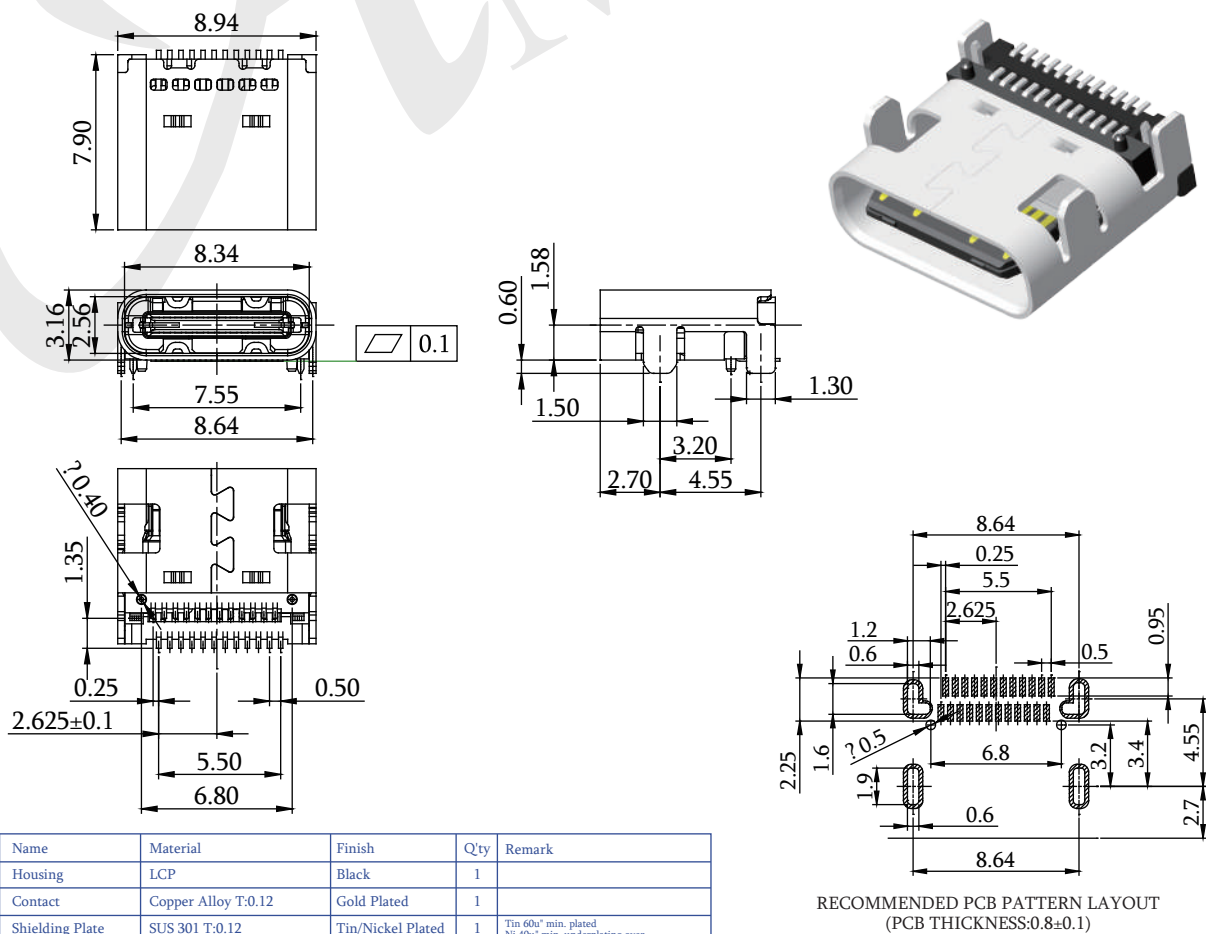
# USB 3.1 C Type



## USB 3.1 C Type Female Receptacle Vertical 24P



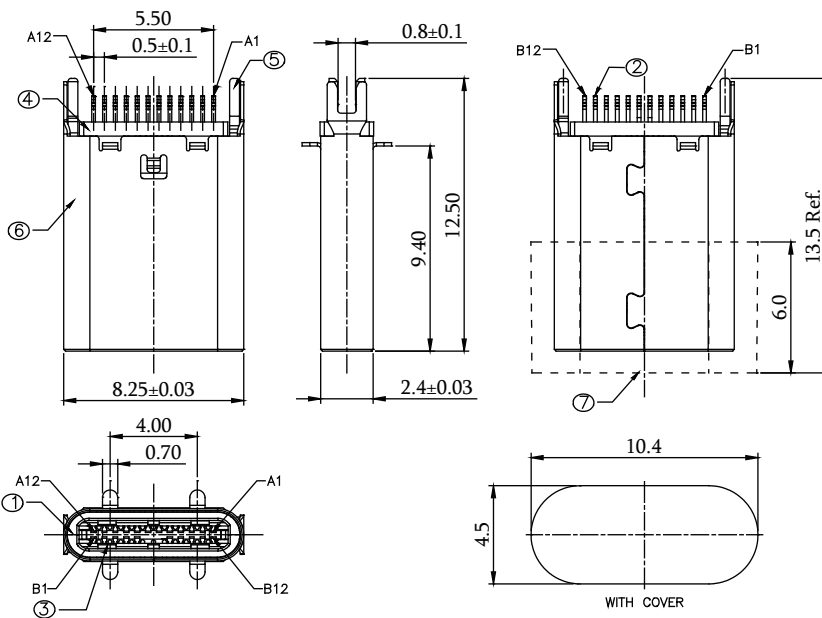
## USB 3.1 C Type Female SMT 90° 24P



No.	Name	Material	Finish	Q'ty	Remark
1	Housing	LCP	Black	1	
2	Contact	Copper Alloy T:0.12	Gold Plated	1	
3	Shielding Plate	SUS 301 T:0.12	Tin/Nickel Plated	1	Tin 60µ" min. plated Ni 40µ" min. underplating over
4	Spring	SUS 304 T:0.10	No Plated	1	
5	Shell	SUS 304 T:0.30	Black/White	1	Ni: 40µ" Min.



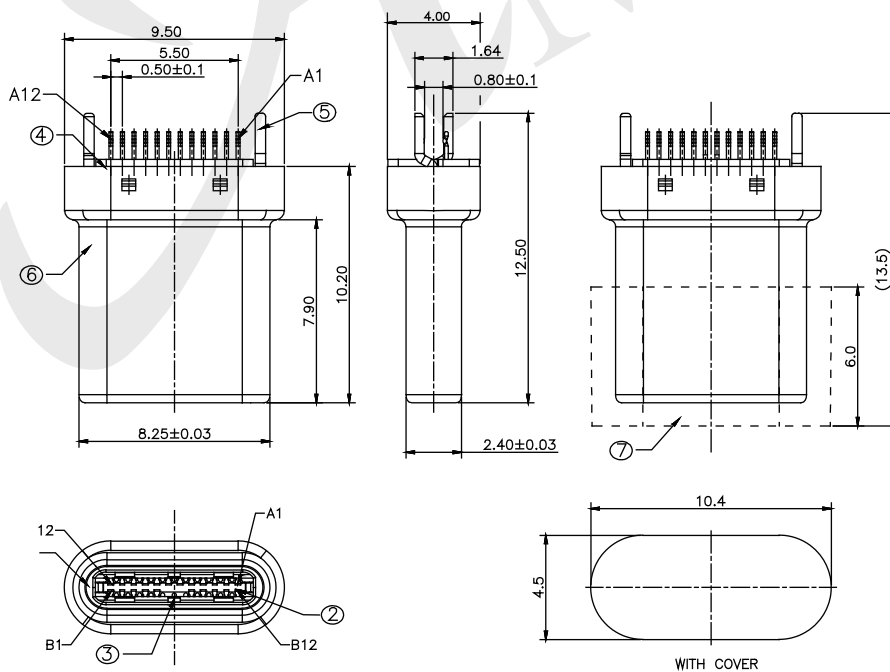
## USB 3.1 C Type Male Solder



No.	Name	Material	Finish	Qty	Remark
1	Housing	Hi-Temp. Plastic		2	UL94V-0
2	Contact	Copper Alloy T:0.15	Gold/Tin Plated	2	
3	EMI Spring	Stainless Steel		2	
4	I/M Part	Hi-Temp. Plastic	Gold/Tin Plated	2	
5	Latch	Stainless Steel	Ni 50u* Min.	1	
6	Shell	Stainless Steel	Ni 30u* Min.	1	
7	Cover	Hi-Temp. Plastic		1	Option

P/N.:5US4C05SM-124SDBUAQ1

## USB 3.1 C Type Male Solder



No.	Name	Material	Finish	Qty	Remark
1	Housing	Hi-Temp. Plastic		2	UL94V-0
2	Contact	Copper Alloy T:0.15	Gold/Tin Plated	2	
3	EMI Spring	Stainless Steel		2	
4	I/M Part	Hi-Temp. Plastic	Gold/Tin Plated	2	
5	Latch	Stainless Steel	Ni 50u* Min.	1	
6	Shell	Stainless Steel	Ni 50u* Min.	1	
7	Cover	Hi-Temp. Plastic		1	Option

P/N.:5US4C06SM-124SDWUAQ1

USB 3.1 C Type



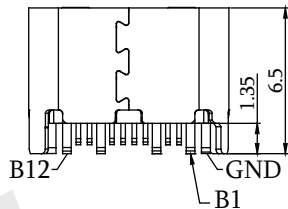
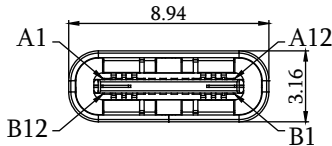
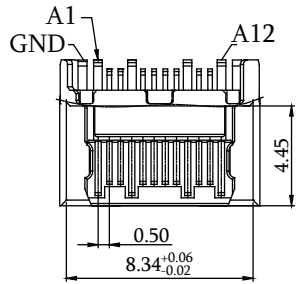
ROHS

AMTEK CONNECTORS MANUFACTURER

# U SB 3.1 C Type

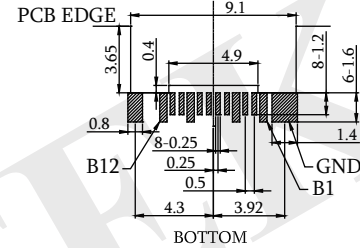
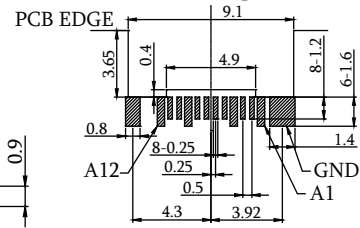


## USB 3.1 C Type Female Dip 180° H=6.5mm



Pin No	Signal Name	Pin No	Signal Name
A1	GND	B12	GND
A2	TX1+	B11	RX1+
A3	TX1-	B10	RX1-
A4	Vbus	B9	Vbus
A5	CC1	B8	SBU2
A6	D+	B7	D-
A7	D-	B6	D+
A8	SBU1	B5	CC2
A9	Vbus	B4	Vbus
A10	RX2-	B3	TX2-
A11	RX2+	B2	TX2+
A12	GND	B1	GND

No.	Name	Material	Finish	Qty	Remark
1	Housing	Thermoplastic	Black	3	UL94V-0
2	Contact	Copper Alloy T:0.15	Gold/Tin Plated	24	Contact area: 30u" PD/Ni+Gold Flash Solder area: 80u"min. matte Tin Plated over Nickel
3	Gnd Plates	SUS T:0.10	Matte Tin Plated	3	
4	Shell	SUS T:0.30	Matte Tin Plated	1	

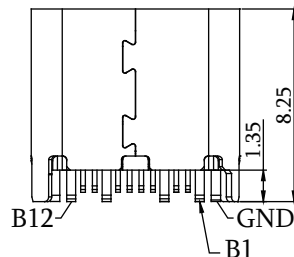
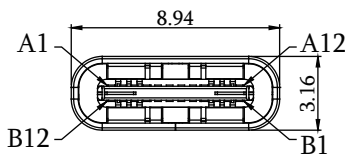
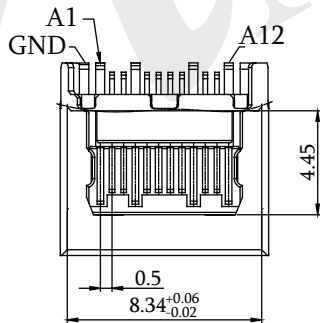


RECOMMENDED PCB PATTERN LAYOUT  
(PCB THICKNESS:0.8±0.1)

**P/N.:5US4C01TF-124XXBUHC1**

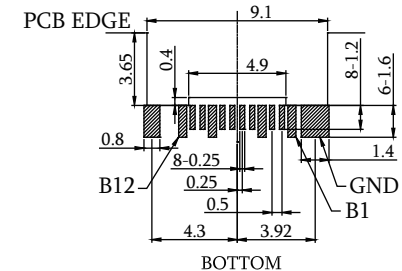
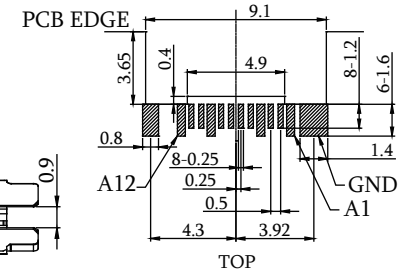
**S0:Selective**  
**SF:Selective 15u"**  
**SD:Selective 30u"**

## USB 3.1 C Type Female Dip 180° H=8.25mm



Pin No	Signal Name	Pin No	Signal Name
A1	GND	B12	GND
A2	TX1+	B11	RX1+
A3	TX1-	B10	RX1-
A4	Vbus	B9	Vbus
A5	CC1	B8	SBU2
A6	D+	B7	D-
A7	D-	B6	D+
A8	SBU1	B5	CC2
A9	Vbus	B4	Vbus
A10	RX2-	B3	TX2-
A11	RX2+	B2	TX2+
A12	GND	B1	GND

No.	Name	Material	Finish	Qty	Remark
1	Housing	Thermoplastic	Black	3	UL94V-0
2	Contact	Copper Alloy T:0.15	Gold/Tin Plated	24	Contact area: 30u" PD/Ni+Gold Flash Solder area: 80u"min. matte Tin Plated over Nickel
3	Gnd Plates	SUS T:0.10	Matte Tin Plated	3	
4	Shell	SUS T:0.30	Matte Tin Plated	1	



RECOMMENDED PCB PATTERN LAYOUT  
(PCB THICKNESS:0.8±0.1)

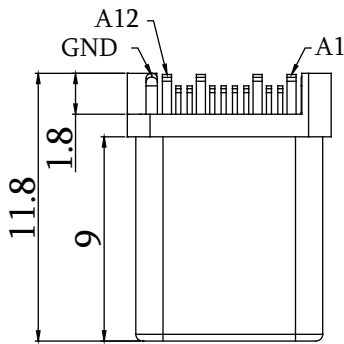
**P/N.:5US4C01TF-124XXBUHC2**

**S0:Selective**  
**SF:Selective 15u"**  
**SD:Selective 30u"**

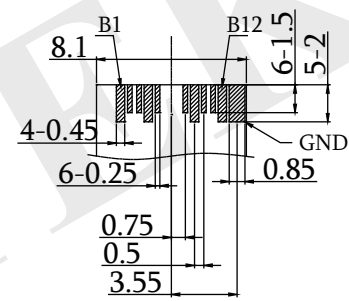
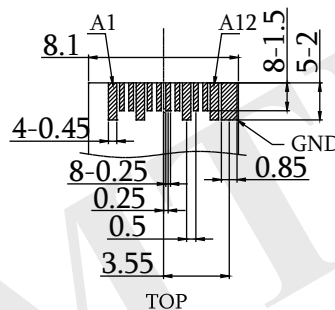
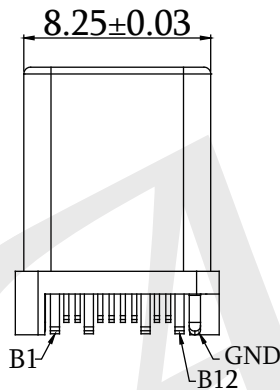
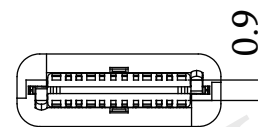
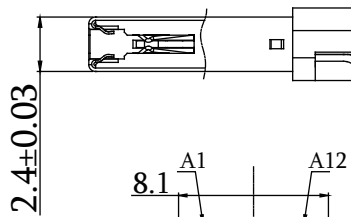
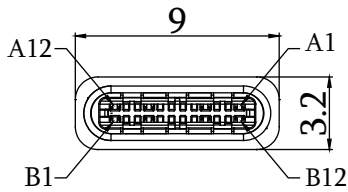
# CONNECTORS MANUFACTURER



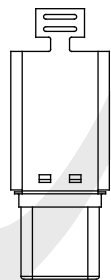
## USB 3.1 C Type Female Dip 180°



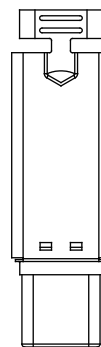
Pin No	Signal Name	Pin No	Signal Name
A1	GND	B12	GND
A2	TX1+	B11	RX1+
A3	TX1-	B10	RX1-
A4	Vbus	B9	Vbus
A5	CC	B8	SBU2
A6	D+	B7	
A7	D-	B6	
A8	SBU1	B5	Vconn
A9	Vbus	B4	Vbus
A10	RX2-	B3	TX2-
A11	RX2+	B2	TX2+
A12	GND	B1	GND



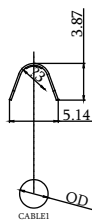
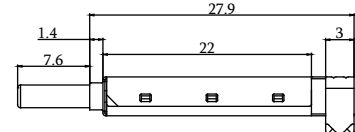
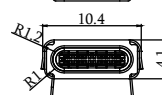
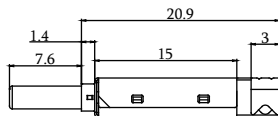
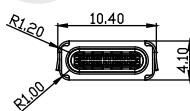
P.C.B. LAYOUT TOLERANCE: ±0.1



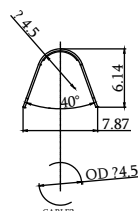
SHORT



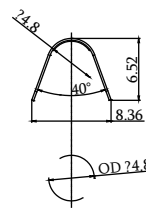
LONG



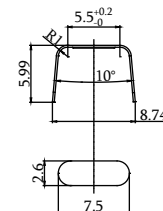
TYPE-1(OD? 3.0)



TYPE-2(OD? 4.5)



TYPE1(OD? 4.8)



TYPE2(OD? 5.2\*6)

No.	Name	Material	Finish	Q'ty	Remark
1	Housing	Thermoplastic	Black	3	UL94V-0
2	Contact	Copper Alloy T:0.15	Gold/Tin Plated	24	Contact area: 30u" PD/Ni+Gold Flash Solder area: 80u"min. matte Tin Plated over Nickel
3	Gnd Plates	SUS T:0.35	Matte Tin Plated	1	
4	Shell 1	SUS	No Plated	1	
5	Shell 2	Copper Alloy T:0.15	Nickel Plated	1	

P/N.:5US4C01TM-124XXBUHCX

- S0: Selective
- SF: Selective 15u"
- SD: Selective 30u"
- 1: W/O Shell
- 2: Short Shell, Type1
- 3: Short Shell, Type2
- 4: Long Shell, Type1
- 5: Long Shell, Type2